

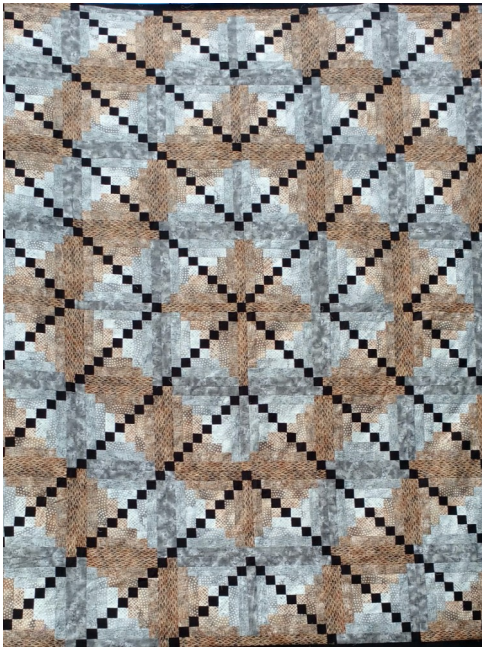
# Fall 2018 Quilt Retreat

## Presented by Sheila Reinke

The **Suburban Skies** quilt is one option this fall as we use a bright and fun collection full of movement by RJR Fabrics. If you want to create a more modern quilt at this retreat, this is the one you'll want to go for. Quilt size 60 x 72". The fabrics are beautiful and can be seen up close on my website: [www.sheilareinke.com](http://www.sheilareinke.com). Check them out!

Most quilters have made a courthouse steps quilt or included cornerstones in a quilt, but we're going to combine the two. The second option this fall is to make a variation of a **Cornerstone Courthouse Steps**. We are using beautiful browns and grays OR a blue and gray denim floral by Paintbrush Studios to create this new, yet classic quilt. Quilt size 75 x 98".

Sheila Reinke, grandmother to eleven, quilting enthusiast and instructor, will be presenting six quilt retreats in the fall of 2018 in Nebraska, Iowa, Minnesota and Kentucky. Keep up-to-date with info about the quilt retreats and see more pictures and details on her website: [www.SheilaReinke.com](http://www.SheilaReinke.com).



### Retreat Location:

General Butler State Resort Park  
1608 Kentucky 227, Carrollton, KY 41008

### Lodging Location:

Hampton Inn Carrollton  
7 Slumber Lane, Carrollton, KY 41008

### When:

Thursday, November 1 @ 5:00pm to Saturday, November 3 @ 3:30pm

### Cost:

\$299.00 - fee includes \$40 gift card for meals, two nights lodging (double occupancy), pattern and fabric to make a quilt as sized above in description.

### Deposit:

\$150.00 due at time of registration.

### Final Payment:

Due October 18, 2018\*\*

\* There will be a fabric store at the retreat, with fabrics available to upgrade your quilt to a Queen or King size.

\*\* Registrations will be taken until the retreat is full. If you know you are coming, don't delay in getting your registration in, so we make sure we have enough fabric and rooms for all!

# Fall 2018 Quilt Retreat

## Location: Carrollton, KY

### Presented by: Sheila Reinke

Mail Registration & Deposit to:      With questions, contact:

The Heart of Sewing                      Sheila Reinke

Attn: Sheila Reinke                      sheilarreinke@gmail.com

4516 S. 184<sup>th</sup> Plz                      402-894-1232

Omaha, NE 68135                      www.sheilareinke.com

First Name		Last Name	
Street Address			
City		State	Zip Code
Home Phone		Cell Phone	<i>Phone numbers are in case any changes need to be made due to weather, etc.</i>
Email Address			<i>Giving your email here does NOT sign you up for the automatic update email list - for that you must opt-in at The Heart of Sewing blog</i>
Deposit of \$150 is due in advance of retreat - please include with this registration form		Indicate (circle below) the type of payment you are sending (check or credit card) For your safety, please do not send cash through the mail	
<b>CHECK</b> Make payable to "The Heart of Sewing"		Visa                      Master Card                      Discover	
For Credit Card Payments ONLY	Card Number		/                      — — — Exp Date                      CVV #
Signature (for ALL payment types)			
Roommate Assignment Choose One:		<input type="checkbox"/> I will be coming alone	
		<input type="checkbox"/> I will be coming with (friend's name)	
Choose Quilt : <input type="checkbox"/> Suburban Skies <input type="checkbox"/> Cornerstone Courthouse Steps Choose one color combination <input type="checkbox"/> Brown/Grey <input type="checkbox"/> Blue/Grey			