

Fall 2017 Quilt Retreat

Presented by Sheila Reinke

The **Suburban Skies** quilt is one option this fall as we use a bright and fun collection full of movement by RJR Fabrics. If you want to create a more modern quilt at this retreat, this is the one you'll want to go for. The fabrics are beautiful and can be seen up close on my website: www.sheilareinke.com. Check them out!

Most quilters have made a log cabin quilt or included cornerstones in a quilt, but we're going to combine the two. The second option this fall is to make a variation of a **Cornerstone Log Cabin**. We are using beautiful browns and grays by Paintbrush Studios to create this new, yet classic quilt.

Sheila Reinke, grandmother to ten, quilting enthusiast and instructor, will be presenting six quilt retreats in the fall of 2017 in Nebraska, Iowa, Minnesota and Kentucky. Keep up-to-date with info about the quilt retreats and see more pictures and details on her website: www.SheilaReinke.com.



NEW Retreat Location:

Ormsby Getaway, 207 Broadway Ave, Ormsby, MN 56162
www.ormsbygetaway.com

When:

October 8, 2017 (Sunday) at 5:00 PM to October 10, 2017 (Tuesday) at 3:30 PM
For other dates and locations, visit www.SheilaReinke.com

Contact:

Sheila Reinke 402-894-1232 csreinke@cox.net

Cost:

\$285.00 (including deposit) - fee includes 5 meals starting Monday morning, 2 nights lodging (no single occupancy available), pattern and fabric to make a 60 x 72" quilt top.*

Deposit:

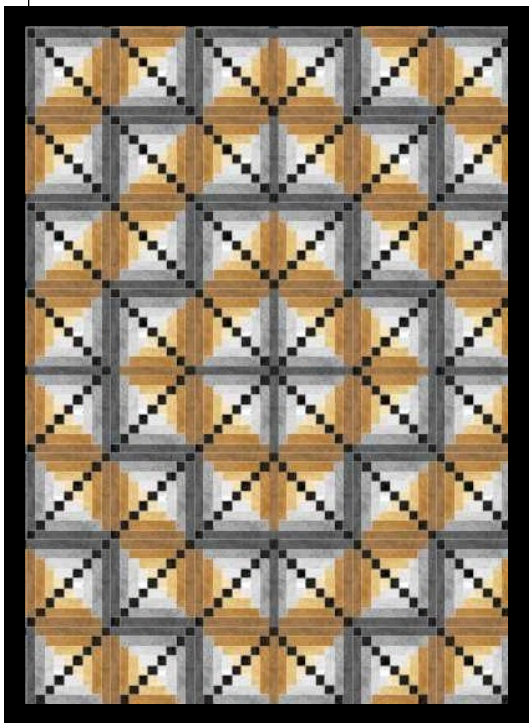
\$150.00 due at time of registration.

Final Payment:

Due October 1, 2017 **

* There will be a fabric store at the retreat, with fabrics available to upgrade your quilt to a Queen or King size.

** Registrations will be taken until the retreat is full. If you know you are coming, don't delay in getting your registration in, so we make sure we have enough fabric for all!



Fall 2017 Quilt Retreat

Location: Ormsby, MN

Presented by: Sheila Reinke

Mail Registration & Deposit to: With questions, contact:

The Heart of Sewing
Attn: Sheila Reinke
4516 S. 184th Plz
Omaha, NE 68135

Sheila Reinke
csreinke@cox.net
402-894-1232
www.sheilareinke.com

First Name		Last Name	
Street Address			
City		State	Zip Code
Home Phone		Cell Phone	<i>Phone numbers are in case any changes need to be made due to weather, etc.</i>
Email Address			<i>Giving your email here does NOT sign you up for the automatic update email list - for that you must opt-in at The Heart of Sewing blog</i>
Deposit of \$150 is due in advance of retreat - please include with this registration form		Indicate (circle below) the type of payment you are sending (check or credit card) For your safety, please do not send cash through the mail	
CHECK Make payable to "The Heart of Sewing"		<div style="display: flex; justify-content: space-around;"> Visa Master Card Discover </div>	
For Credit Card Payments ONLY	Card Number		/ Exp Date CVV #
Signature (for ALL payment types)			
Roommate Assignment Choose One:		<input type="checkbox"/> I will be coming alone	
		<input type="checkbox"/> I will be coming with (friend's name)	
Choose Quilt : <input type="checkbox"/> Suburban Skies <input type="checkbox"/> Cornerstone Log Cabin			